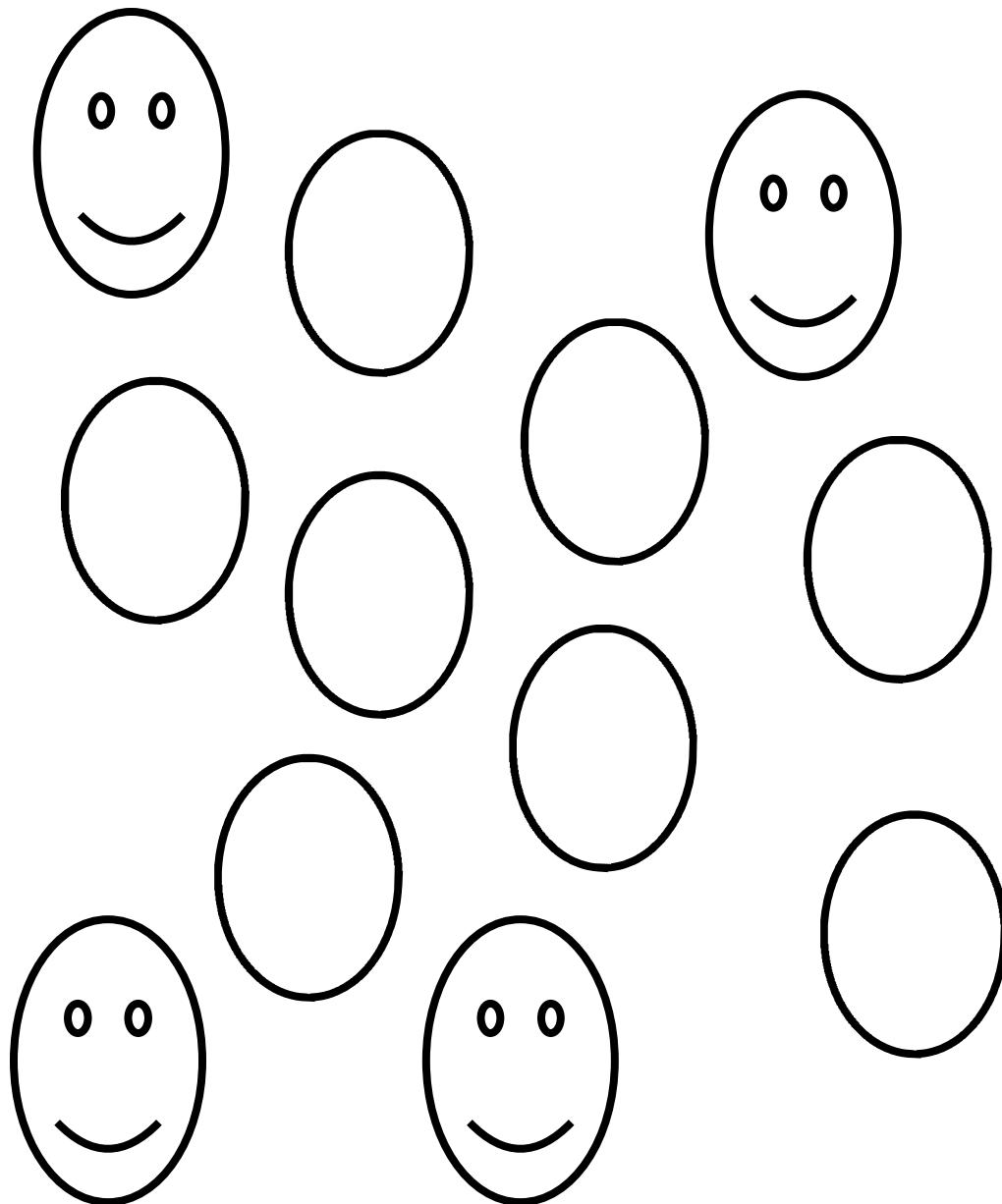
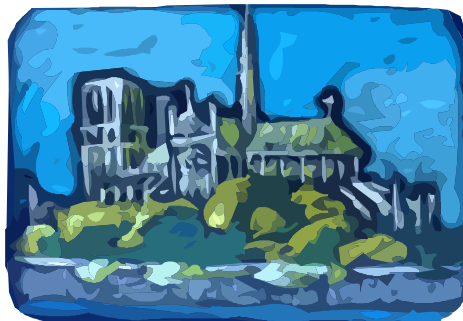
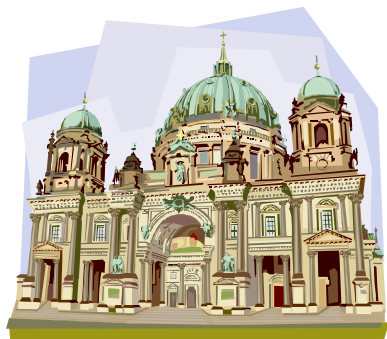


Churches are made up of different people.  
Draw and name the people in your church.



**Churches are all different, draw what your church looks like.**



Trace the letters and then  
read the message!

I

GO

TO

CHARM

## Dot to Dot

5

4•

•6

3•

•7

2•

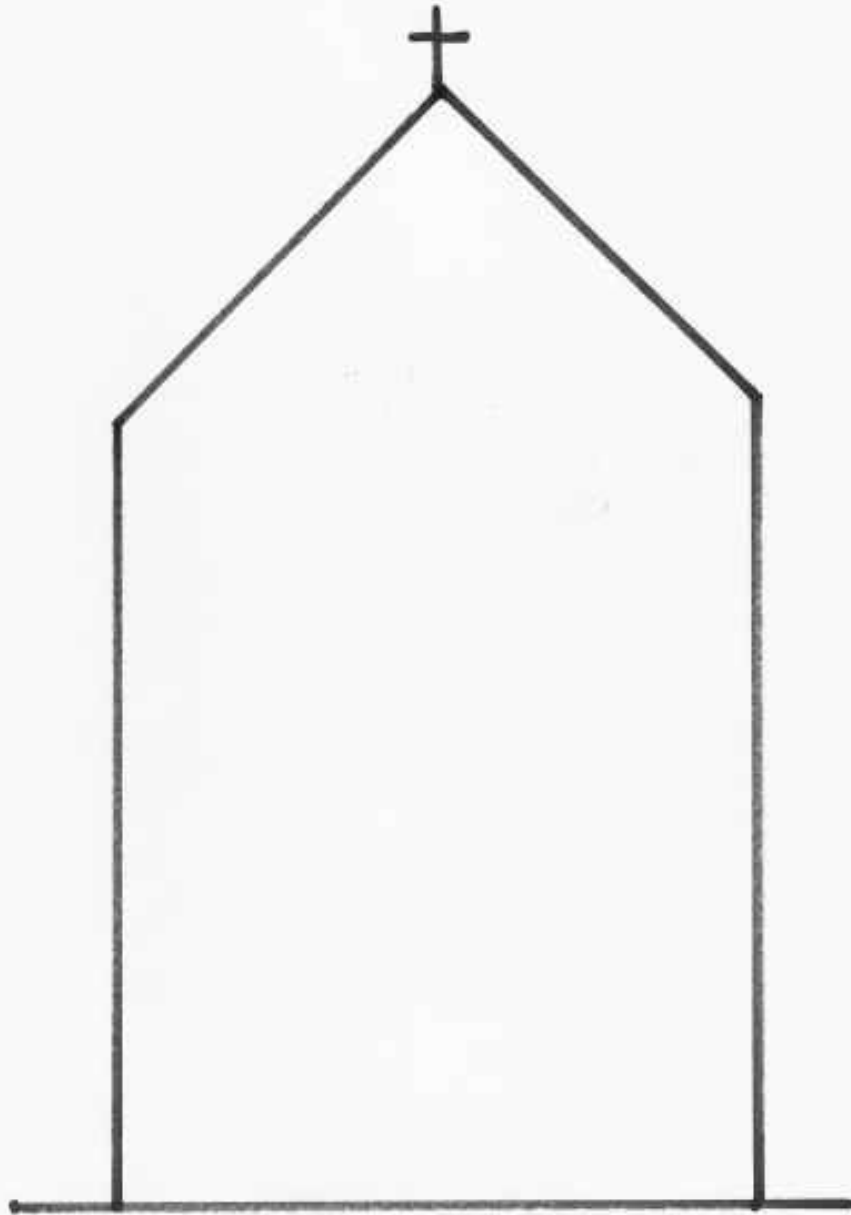
•8

1•

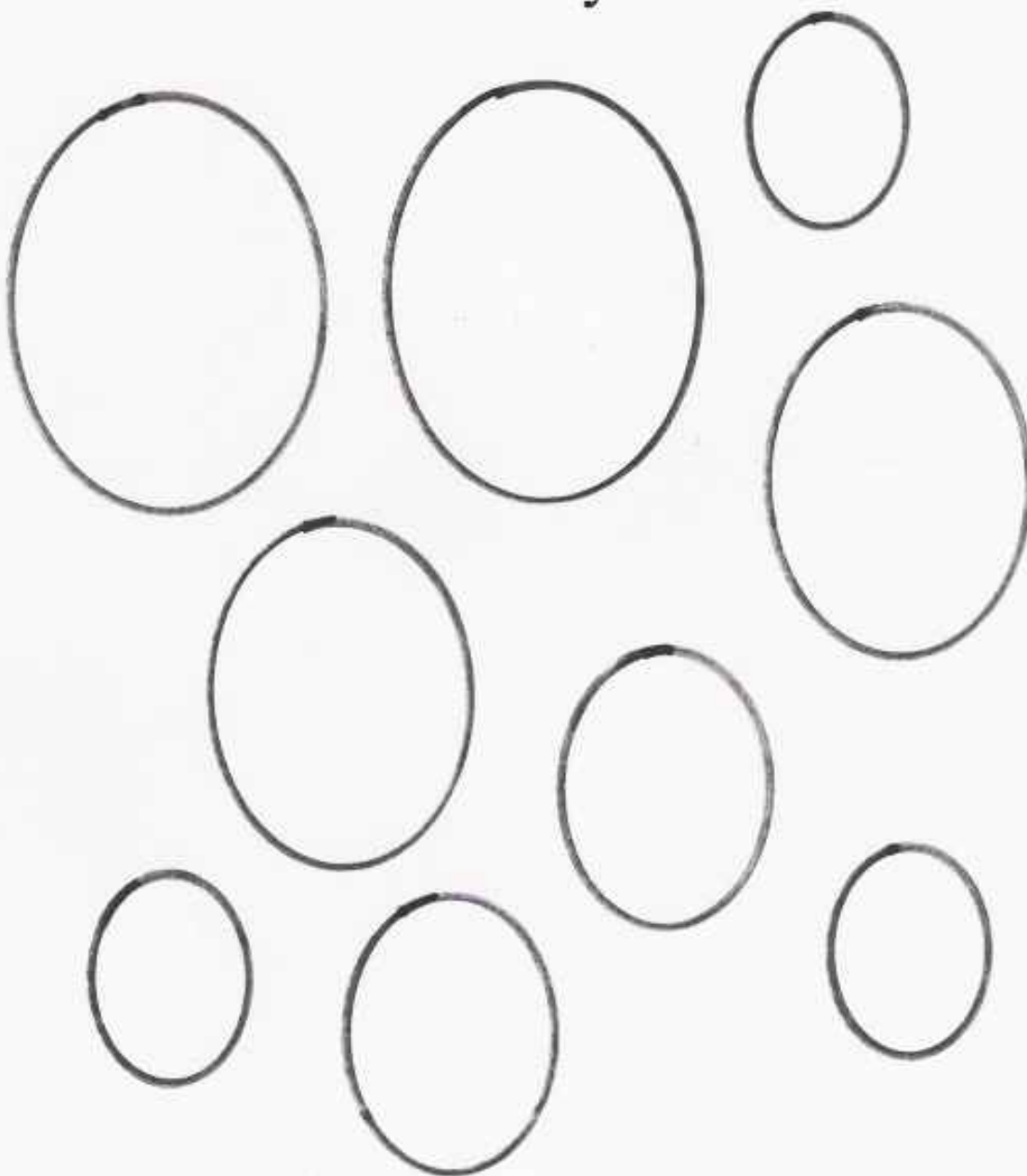
•9

Can you put a cross on top of  
your church?

Put people in the church



Put faces on your church  
family!



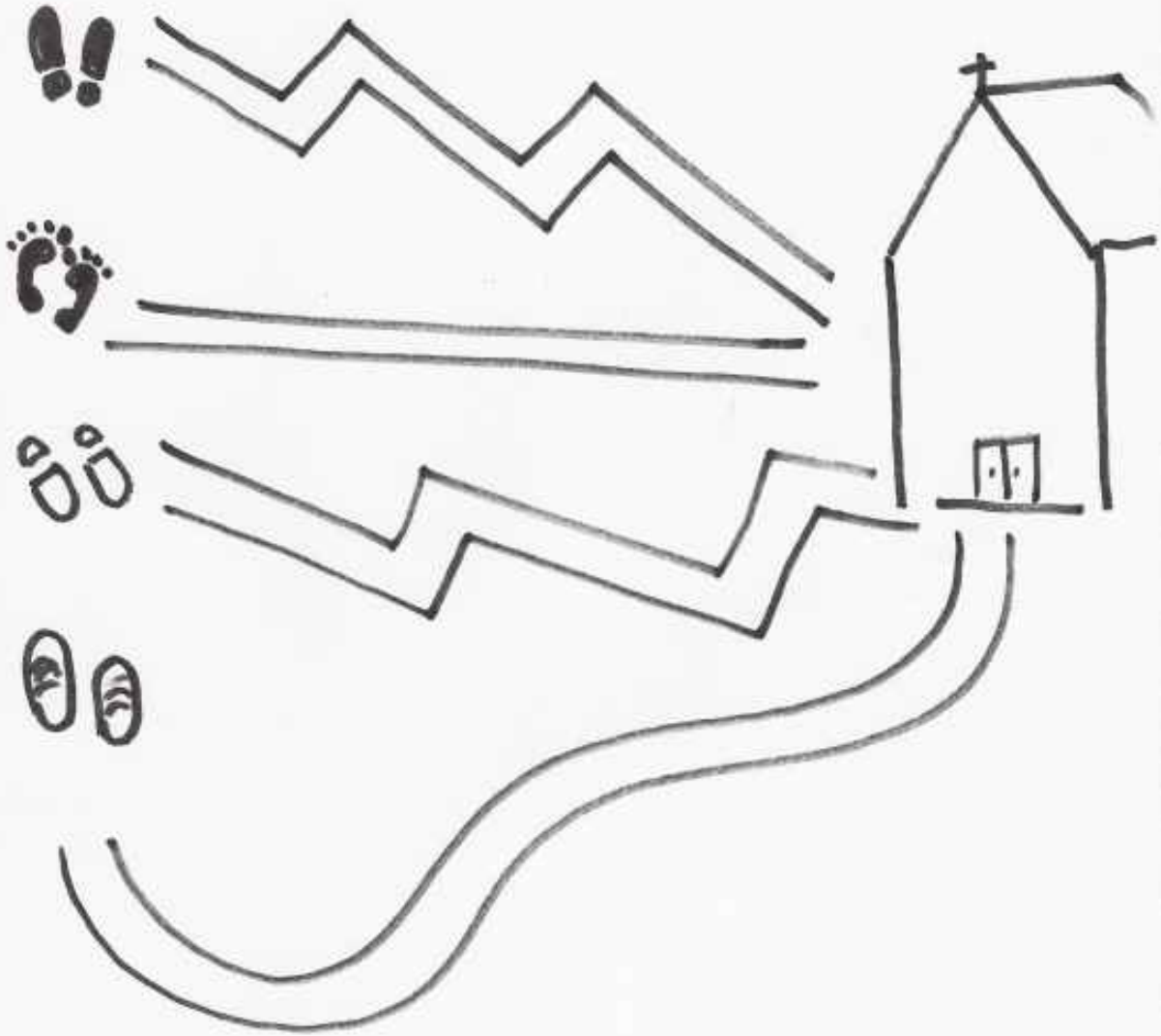
Follow the footprints to church!



Match the feet!



Follow the paths to church!



# Color the Church

